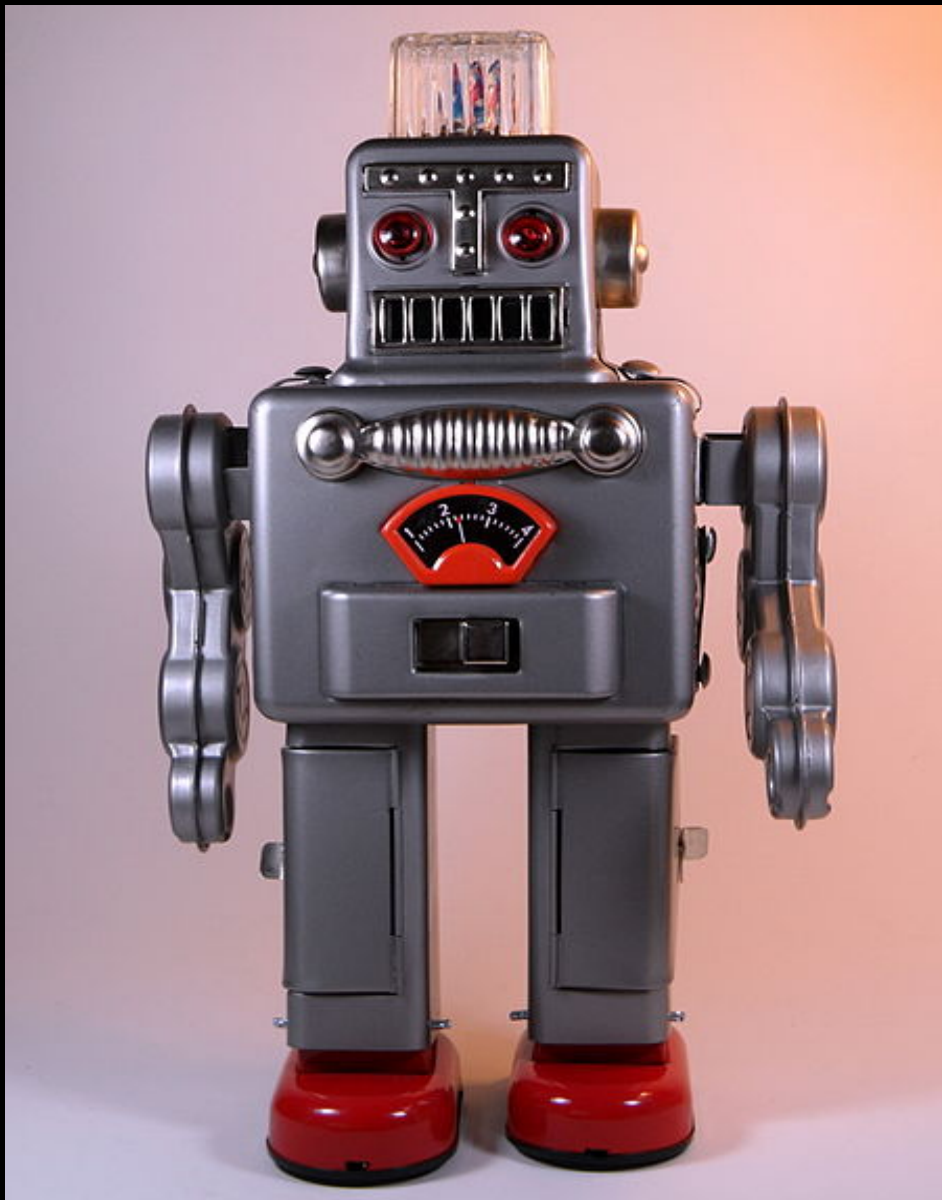

**Bridging to the future:
dealing with risk proactively
Part One**

Futurology for regulators

Harry Cayton
International Advisor





**Futurology is a mug's game
but let's try....**

Technologies.....

- Digital communications
- Social media
- Artificial intelligence
- Drones, robots and driverless vehicles
- Health technologies
- And low-tech innovations

Health and disease....

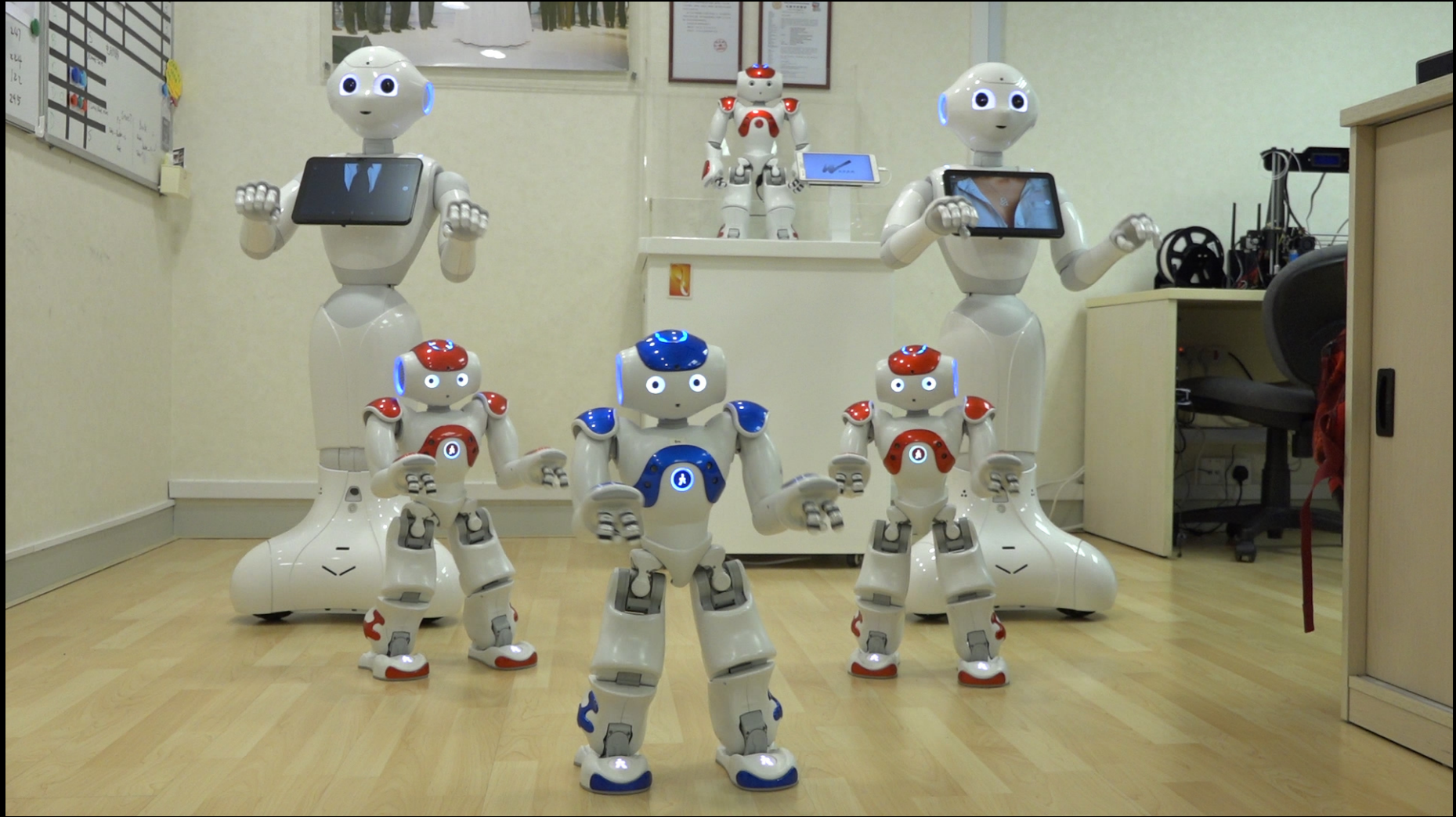
- Ageing populations
- Long-term conditions
- 'Life-style disorders'
- Epidemics and pandemics
- Natural disasters

People....

- Expectations about work
- Expectations about service
- Supply and demand
- People have minds of their own
- Consciousness and ethical thinking

Societies.....

- Economic inequalities
- Health inequalities
- Mass migration
- Distribution of the health workforce
- But...access to communication technologies
- Isolationism or globalism?



Bridging to the future: dealing with risk proactively Part Two

The probability of harm

Harry Cayton
International Advisor



Speigelhalter's* four rules of risk

- Stuff happens
- Compare like with like
- What am I not being told?
- Twice not very much is not very much

*Professor Sir David Speigelhalter, Professor
of the Public Understanding of Risk, University of Cambridge



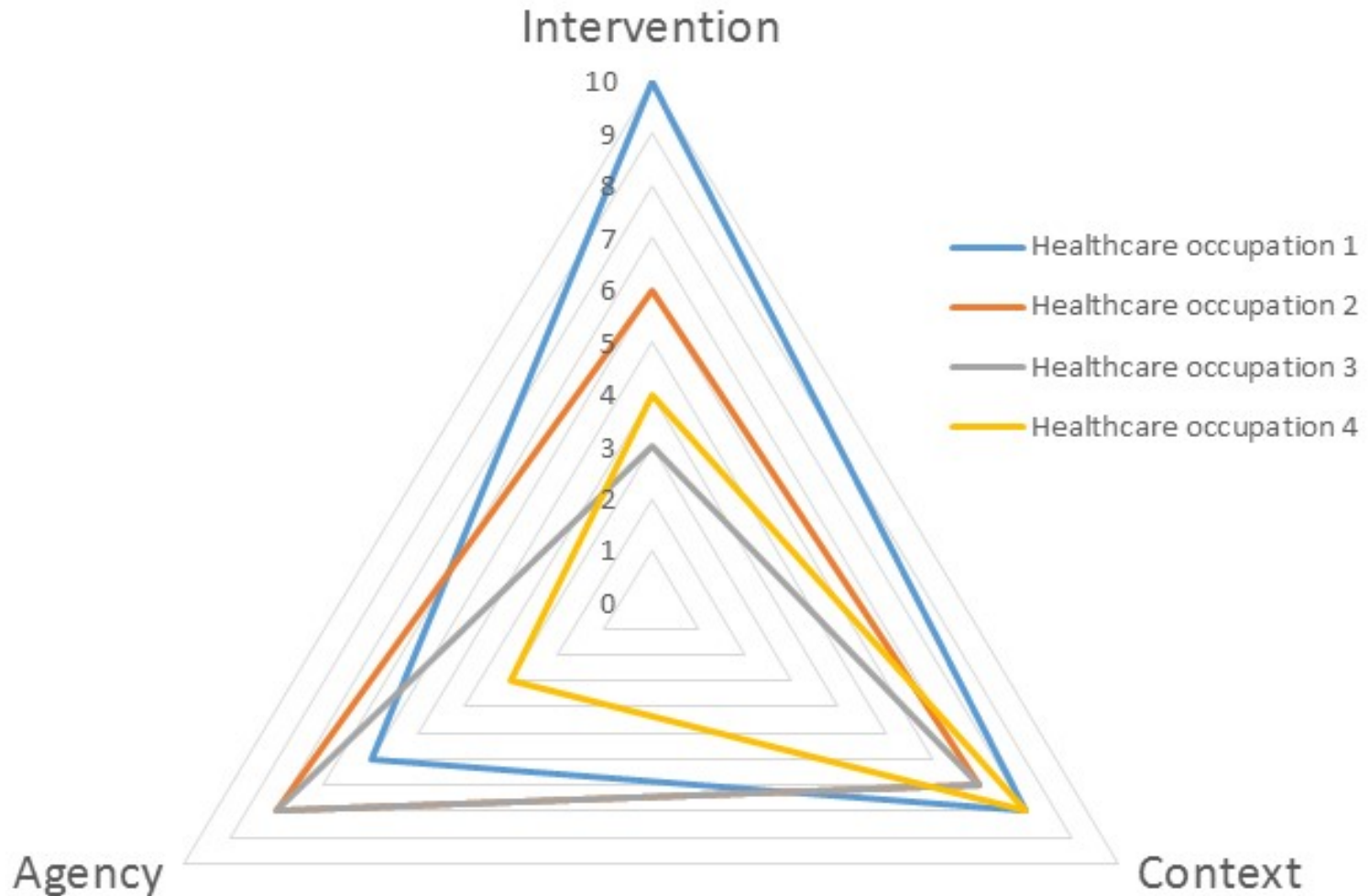
Lies, errors and statistics

- Sample selection
- Percentages mislead
- Beware false precision
- Small numbers mean little
- Quantitative conclusions from qualitative research
- A correlation is not a cause
- Conscious and unconscious bias

A three dimensional model of risk

- We are used to two dimensions:
 - likelihood
 - severity
- Right-touch assurance applies the two dimensions to three factors
 - activity
 - agency
 - Context

Profiling the intrinsic risk of harm



Extrinsic factors

- Volume of risk of harm
- Means of assurance
- Sector impact
- Risk perception
- Unintended consequences

contact me at
harrycayton@harrycayton.net

www.professionalstandards.org.uk



The qualities we need

- Curiosity
- Skepticism
- Tenacity
- Precision