



2024 SCIENTIFIC SYMPOSIUM

From Data to Policy

Jan. 23–24, 2024 • Scottsdale, Ariz.





National Database: Quality Indicators of Nursing Education Programs

Nancy Spector, PhD, RN, FAAN

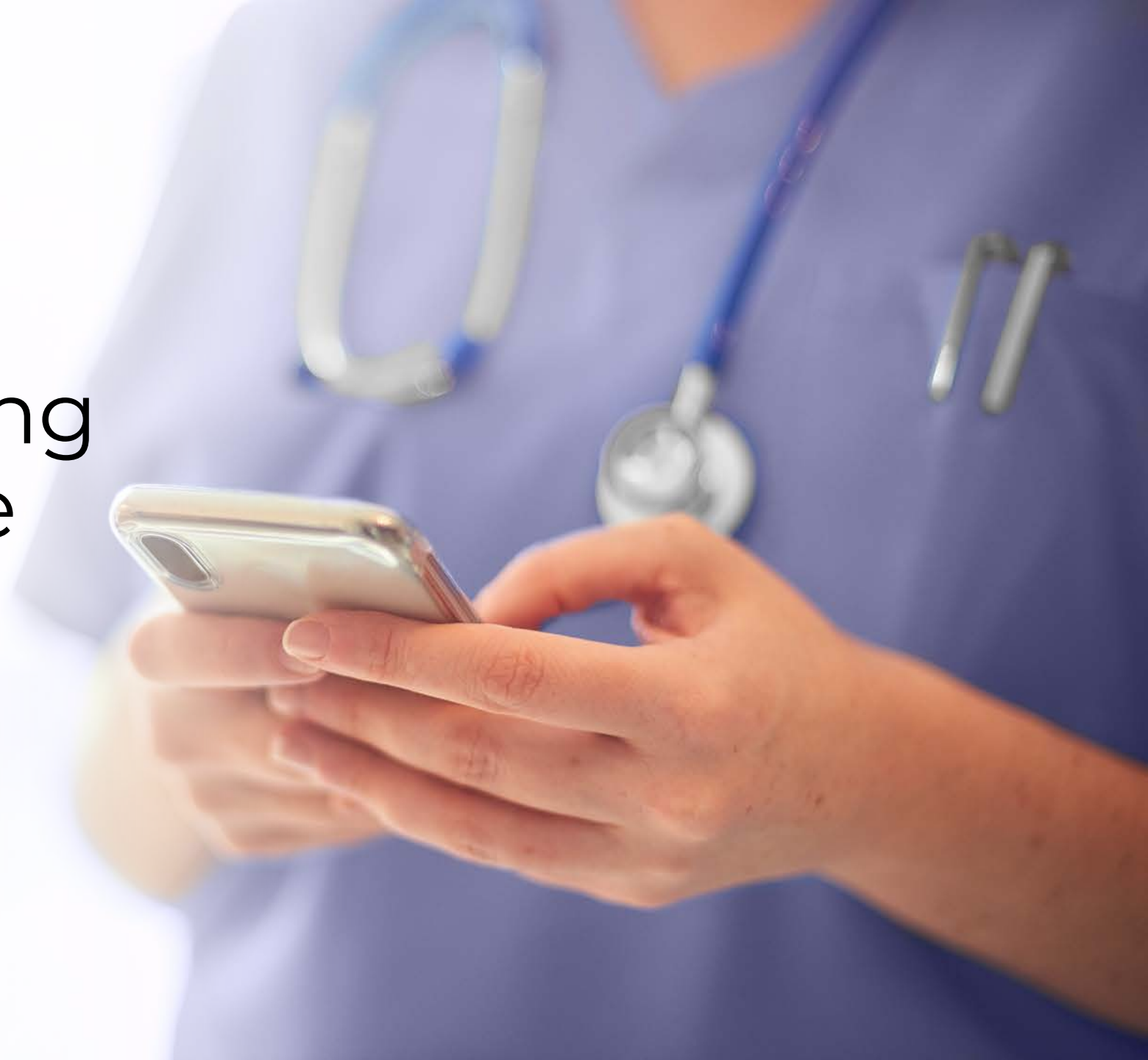
2024 SCIENTIFIC SYMPOSIUM





NCSBN's Board of Directors requested the development of quality indicators for nursing education programs that would be legally defensible and evidence-based.

USDE,
National Nursing
Accreditors are
**not evidence
based.**





Evidence-Based Approval

5-Year Site Visits

Qualitative analysis of 1,278 site visit reports for LPN/LVN and RN programs.



Literature Review

65 published articles reviewed and graded using the Johns Hopkins Levels of Evidence and Quality Guide.



5-Year Annual Reports

Retrospective quantitative analysis of 11,378 annual report data collected from 2012-2017 by 43 NRBs.



Delphi

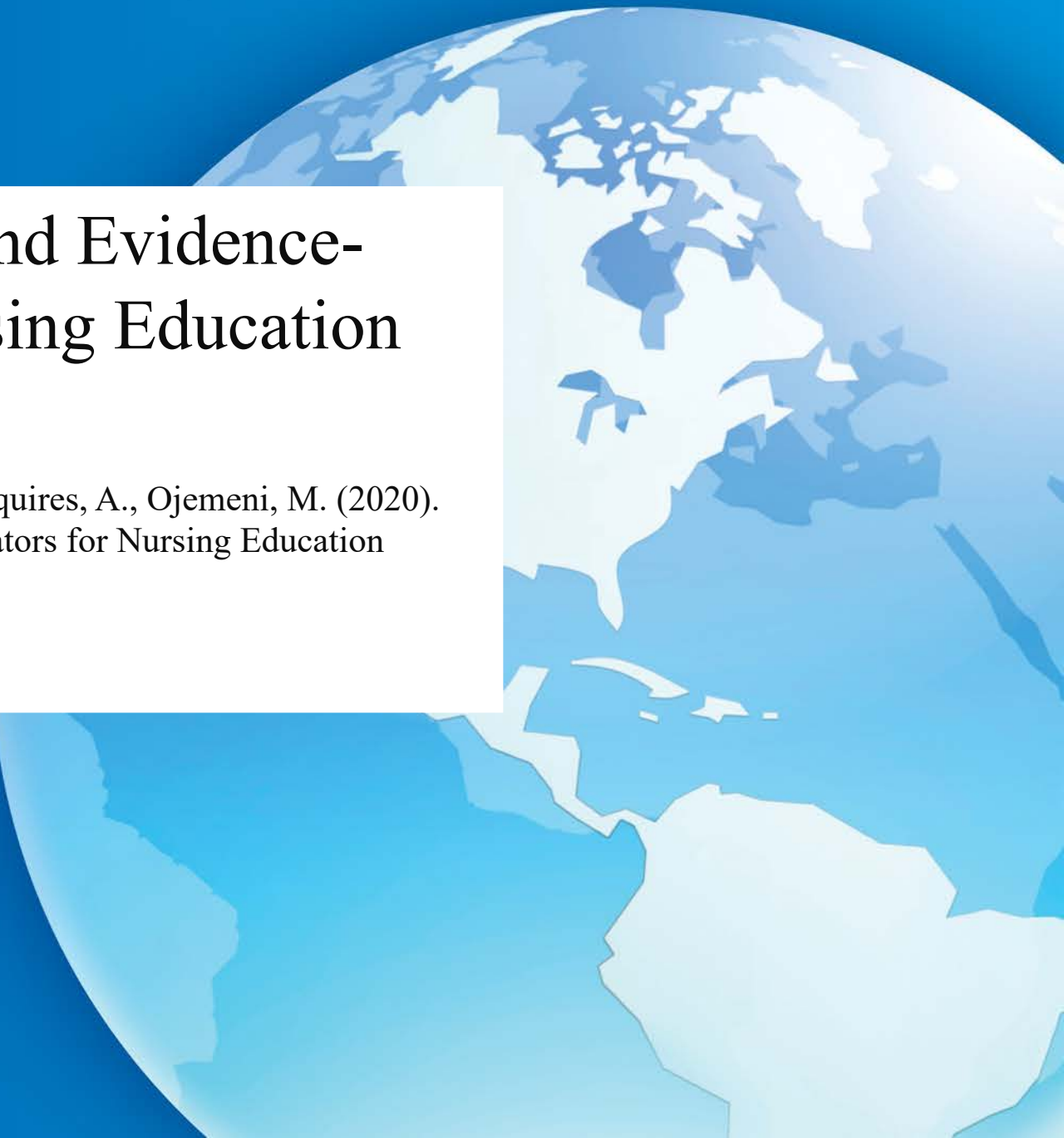
Consensus from experts in nursing education, regulation and practice.



Regulatory Guidelines

- Results of comprehensive study reviewed by:
 - Regulators
 - Educators
 - Attorneys
 - Researchers
- At least 2 of the 4 national studies must have provided evidence for each guideline






NCSBN Regulatory Guidelines and Evidence-Based Quality Indicators for Nursing Education Programs

Spector, N., Silvestre, J., Alexander, M., Martin, B., Hooper, J.I., Squires, A., Ojemeni, M. (2020). NCSBN Regulatory Guidelines and Evidence-Based Quality Indicators for Nursing Education Programs. *Journal of Nursing Regulation*, 11(2), S1-S64.

DOI: [https://doi.org/10.1016/S2155-8256\(20\)30075-2](https://doi.org/10.1016/S2155-8256(20)30075-2)

JOURNAL
OF NURSING
REGULATION

journalofnursingregulation.com

The background features a complex digital aesthetic. It consists of numerous thin, glowing lines in shades of blue, cyan, and yellow, some of which form a perspective grid that recedes into the distance. The overall color palette is dominated by deep blues and teals, with bright highlights from the glowing lines. The text is centered in the lower half of the image.

NURSING EDUCATION Approval Guidelines



Types of Programs

- LPN/VN
- Diploma
- Associate's (ADN)
- Bachelor's (BSN)
- Accelerated BSN
- Master's Entry

Demographics

- Geographic location
- Institutional ownership
- Learning modalities
- Simulation clinical experiences offered
- Administrative responsibility for allied health
- Assistant/associate director
- Dedicated administrative support
- Orientation: adjunct, part-time, full-time faculty
- Mentoring of full-time faculty





Clinical Hours

- Direct patient care hours
- Simulation hours
- Skills lab hours

Key Quality Indicators

- Accreditation
- Approval status
- NCLEX trends
- Major organizational changes
- Director turnover
- Less than 50% direct patient care in all courses
- Less than 35% full-time faculty
- Less than 70% graduation rates
- Younger than 7 years



Other Quality Indicators

- Disability support
- Services for low socioeconomic students
- ESL services/resources
- Remediation for low academics
- Remediation for students making errors/near misses
- Certified simulation faculty
- Accreditation of simulation labs



Aggregate Report

	2020-2021	2021-2022
Participating NRBs	20	23
Number of Programs	843	972
Enrolled Students	112,147	124,912
Full-time Faculty	8,263	9,653
Part-time Faculty	3,104	4,402
Clinical Adjunct Faculty – Employed by Program	7,768	8,822
Clinical Adjunct Faculty – Not Employed by Program	472	837

2021-2022 Demographics

	LPN/VN	Diploma	Associate's	Bachelor's	Accelerated BSN	Master's Entry
N	330	5	367	234	29	7
Geographic Location						
Urban	27.3%	40.0%	29.7%	45.3%	65.5%	28.6%
Suburban	22.7%	40.0%	20.4%	24.4%	34.5%	57.1%
Rural	48.8%	20.0%	47.4%	27.8%	0.0%	14.3%
Other	1.2%	0.0%	2.5%	2.6%	0.0%	0.0%
Institutional Ownership						
Public	84.5%	40.0%	81.5%	45.7%	37.9%	42.9%
Private Not for Profit	3.0%	40.0%	6.5%	44.4%	37.9%	57.1%
Private for Profit	12.4%	20.0%	12.0%	9.8%	24.1%	0.0%

2021-2022 Demographics

	LPN/VN	Diploma	Associate's	Bachelor's	Accelerated BSN	Master's Entry
N	330	5	367	234	29	7
Learning Modalities						
In-person Only	75.8%	80.0%	56.9%	56.8%	20.7%	57.1%
Online Only	0.0%	0.0%	0.8%	0.0%	3.4%	0.0%
Hybrid	24.2%	20.0%	42.2%	43.2%	75.9%	42.9%
Simulated Clinical Experiences						
Yes	87.2%	100%	96.5%	96.6%	100%	100%
No	17.3%	0.0%	3.5%	3.4%	0.0%	0.0%
Allied Health						
Yes	28.2%	20.0%	24.8%	9.4%	3.4%	0.0%
No	71.8%	80.0%	75.2%	90.6%	96.6%	100%

2021-2022 Demographics

	LPN/VN	Diploma	Associate's	Bachelor's	Accelerated BSN	Master's Entry
N	330	5	367	234	29	7
Assistant Director						
Yes	23.0%	40.0%	27.8%	41.9%	51.7%	42.9%
No	77.0%	60.0%	72.2%	58.1%	48.3%	57.1%
Admin Support						
Yes	83.0%	100.0%	91.6%	89.7%	79.3%	85.7%
No	17.0%	0.0%	8.4%	10.3%	20.7%	14.3%
Orientation: Adjuncts						
Yes	84.5%	80.0%	92.9%	91.0%	96.6%	85.7%
No	15.5%	20.0%	7.1%	9.0%	3.4%	14.3%
Orientation: Part-time						
Yes	83.3%	100.0%	89.4%	86.8%	86.2%	85.7%
No	16.7%	0.0%	10.6%	13.2%	13.2%	14.3%

2021-2022 Demographics

	LPN/VN	Diploma	Associate's	Bachelor's	Accelerated BSN	Master's Entry
N	330	5	367	234	29	7
Orientation FTE Faculty						
Yes	96.1%	100.0%	98.4%	99.1%	100.0%	100.0%
No	3.9%	0.0%	1.6%	0.9%	0.0%	0.0%
Mentoring FTE Faculty						
Yes	88.8%	100.0%	96.2%	92.7%	93.1%	100.0%
No	11.2%	0.0%	3.8%	7.3%	6.9%	0.0%

2021-2022 Clinical Experiences

	LPN/VN	Diploma	Associate's	Bachelor's	Accelerated BSN	Master's Entry
N	330	5	367	234	29	7
Direct Patient Care	406.1	612.0	445.4	610.3	552.9	736.6
Simulation Hours	47.0	56.3	67.4	83.3	93.3	60.0
Skills Lab Hours	110.9	99.3	105.1	112.0	108.1	104.1

Trend of Direct Care Clinical Hours

	2010 (median hours)	2017 (median hours)	2020-21 (mean hours)	2021-22 (mean hours)
Master's entry	770	780	665	736.6
Bachelor's	765	712	625.6	610.3
Associate's	628	573	437.6	445.4
Diploma	720	683	530.2	612.0
LPN/VN	(data not collected)	565	386.3	406.1

Key Quality Indicators

	LPN/VN	Diploma	Associate's	Bachelor's	Accelerated BSN	Master's Entry	Grand Total
N	330	5	367	234	29	7	972
Accreditation							
Yes	12.7%	60.0%	77.1%	97.0%	100.0%	100.0%	60.8%
No	87.3%	40.0%	22.9%	3.0%	0.0%	0.0%	39.2%
NRB Approval							
Yes	91.8%	80.0%	88.8%	92.3%	89.7%	85.7%	90.6%
No	8.2%	20.0%	11.2%	7.7%	10.3%	14.3%	9.4%
Changes in Organization							
Yes	43.6%	60.0%	45.2%	56.0%	72.4%	71.4%	48.4%
No	56.4%	40.0%	54.8%	44.0%	27.6%	28.6%	51.6%
Director Turnover							
Yes	6.7%	0.0%	10.6%	9.0%	20.7%	0.0%	9.1%
No	93.3%	100.0%	89.4%	91.0%	79.3%	100.0%	90.9%

Key Quality Indicators

	LPN/VN	Diploma	Associate's	Bachelor's	Accelerated BSN	Master's Entry	Grand Total
N	330	5	367	234	29	7	972
< 50% Direct Care							
Yes	6.4%	0.0%	6.5%	3.4%	0.0%	0.0%	5.5%
No	93.6%	100.0%	93.5%	96.6%	100.0%	100.0%	94.5%
< 35% FTE							
Yes	19.4%	40.0%	27.8%	30.3%	55.2%	28.6%	26.4%
No	80.6%	60.0%	72.2%	69.6%	44.8%	71.4%	73.6%
< 70% Grad Rate							
Yes	54.5%	100.0%	45.8%	32.1%	37.9%	28.6%	45.4%
No	45.5%	0.0%	54.2%	67.9%	62.1%	71.4%	54.6%
Younger than 7							
Yes	5.1%	0.0%	10.1%	10.7%	20.7%	57.1%	9.2%
No	94.9%	100.0%	89.9%	89.3.0%	79.3%	42.9%	90.8%

Other Quality Indicators

	LPN/VN	Diploma	Associate's	Bachelor's	Accelerated BSN	Master's Entry	Grand Total
N	330	5	367	234	29	7	972
Disability Services							
Yes	97.6%	100.0%	99.5%	99.6%	100.0%	100.0%	98.9%
No	2.4%	0.0%	0.5%	0.4%	0.0%	0.0%	1.1%
Services for Social Status							
Yes	92.4%	80.0%	95.1%	91.5%	82.8%	85.7%	92.8%
No	7.6%	20.0%	4.9%	8.5%	17.2%	14.3%	7.2%
Academic Support							
Yes	82.7%	80.0%	85.3%	84.6%	96.6%	85.7%	84.6%
No	17.3%	20.0%	14.7%	15.4%	3.4%	14.3%	15.4%

Other Quality Indicators

	LPN/VN	Diploma	Associate's	Bachelor's	Accelerated BSN	Master's Entry	Grand Total
N	330	5	367	234	29	7	972
ESL							
Yes	37.6%	40.0%	50.7%	42.3%	34.5%	51.1%	43.7%
No	62.4%	60.0%	49.3%	57.7%	65.5%	42.9%	56.3%
Errors/near misses							
Yes	79.7%	60.0%	84.2%	80.3%	89.7%	85.7%	81.8%
No	20.3%	40.0%	15.8%	19.7%	10.3%	14.3%	18.2%
Sim Certification							
Yes	8.8%	40.0%	19.1%	29.9%	44.8%	57.1%	19.3%
No	73.9%	60.0%	77.4%	66.2%	55.2%	42.9%	72.5%
No Sim	17.3%	0.0%	3.5%	3.8%	0.0%	0.0%	8.1%
Sim Accreditation							
Yes	2.1%	0.0%	2.7%	6.0%	27.6%	14.3%	4.1%
No	80.6%	100.0%	93.7%	90.2%	72.4%	85.7%	87.8%
No Sim	17.3%	0.0%	3.5%	3.8%	0.0%	0.0%	4.1%

Summary of Aggregate Results

- More time is needed in clinical experiences (skills labs, simulation and direct care clinical experiences);
- Increased resources for students with ESL are needed;
- LPN/VN programs should be accredited at a higher level;
- At least 35% of faculty should be full time;
- Graduation rates should increase;
- Higher administrative support of nursing programs should increase; and
- More simulation faculty should become certified and simulation centers should become accredited.



Additional Questions

- NRBs can ask any questions they wish
- 16 COVID-19 questions for during the pandemic (ended in Fall 2022)



What are the Advantages of a National Database?

- Consistency of the data;
- Ability to build sophisticated statistical models;
- Benchmark across programs and NRBs; and
- Proactive in making evidence-based changes before falling below standards.



The Future

- Recruit all NCSBN NRBs
- Webpage updates
- Expand to international NRBs
- Sophisticated dashboard





Nancy Spector, PhD, RN, FAAN

nspector@ncsbn.org

312.525.3657

www.ncsbn.org